



Haringey Council

Report for:	Corporate Parenting Advisory Committee 8 December 2014	Item Number:	
--------------------	---	-------------------------	--

Title:	Performance for the year to October 2014
---------------	---

Report Authorised by:	Jon Abbey Acting Director, Children's Services
----------------------------------	---

Lead Officer:	Margaret Gallagher Corporate Performance Manager
----------------------	---

Ward(s) affected: All	Report for Non Key Decision:
------------------------------	-------------------------------------

1. Introduction

- 1.1. This report provides an analysis of the performance data and trends for an agreed set of measures relating to looked after children on behalf of the Corporate Parenting Advisory Committee.
- 1.2. Section 2 contains performance highlights and key messages identifying areas of improvement and areas for focus.
- 1.3. Section 3 & 4 provides some additional assessment with a focus on looked after children and permanency including the soon to be published Ofsted 2014 Adoption Scorecard. This section also looks at how Haringey performs in comparison to others.
- 1.4. The monthly service scorecard is provided as Appendix 1 so that Members understand how our performance information is collected and analysed in the context of activity relevant to Corporate Parenting Advisory Committee.
- 1.5. Our Ofsted action plan was submitted in October 2014 and feedback was that the plan was fit for purpose and satisfactory. Areas for development will be addressed via the implementation of our Ofsted Improvement Plan with continued focus on delivery and embedding a performance management culture which positively

influences practice and outcomes for young people. The governance for monitoring and review of improvement including performance and quality sits with our “Getting to Good” Board and aligns with our ambition of moving the service to a level that would gain an Ofsted inspection rating of Good by October 2015.

2. Overall Assessment

Outcome 1 & 2: Outstanding for all and Safety and wellbeing for all

Priority 2: Enable every child and young person to thrive and achieve their potential

Priority 4: Safeguard children and adults from abuse and neglect wherever possible, and deal with it appropriately and effectively if it does occur .

Performance Highlights/ Key Messages

- There have been 14 **adoptions** and 9 **special guardianship orders (SGO)** in the year to October, although lower than numbers at the same point last year. There were an additional 4 adoptions and 2 SGOs in November and there are 15 adoption orders in the pipeline.
Haringey had the joint highest number of adoptions in London in 2013/14 but nationally placement orders have seen a substantial reduction in the last nine months possibly as a result of the Public Law Outline and changes in court judgements.
- Progress continues to be made on the **timeliness of children being placed for adoption. Children adopted this year waited an average of 488 days from becoming looked after to being placed for adoption.** This is in line with the national threshold of 487 days for 2012/15 and a considerable improvement on the 778 days in 2013/14.
- **The latest adoption scorecard** shows Haringey’s three year average days from a child entering care to moving in with its adoptive family as 731 days, an increase of 6 days from the previous period and a distance of 184 days from national performance threshold for 2011-14. The Haringey position remains above the 3 year England average of 628 days but current performance demonstrates improvement in this area and Haringey adoptions in 2013/14 included a large proportion of ‘hard to place’ children.
- Indicators around **stability of placements for looked after children** remain in line with statistical neighbours and targets. 9% of children had 3 or more placements and 87% of children looked after for more than 2.5 years have been in the same placement for 2 years or more.

- 97% of children had **up to date health assessments** at the end of October
- **At Key Stage 1**, 86% of looked after children achieved the expected level in reading, 71% in writing and 71% in mathematics significantly better than the national averages (69%, 61% and 71%).
At Key Stage 2, 61% of children looked after continuously for at least 12 months achieved at least level 4 in both English and Mathematics compared with 45% for England. Haringey's 3 year average of 52% is also better than the England average of 46%.
At Key Stage 4, 33% of looked after children achieved A*-C at GCSE including English and mathematics better than the national position of 15%. Haringey's 3 year average of 22% is also better than the England average of 15%.
GCSE attainment in English and maths for 35% of our looked after children was the best performance in the last five years for Haringey and better than the average for our statistical neighbours.

Areas for Focus

- 509 **children were in care** on the last day of October 2014 or 88 per 10,000 population. This remains higher than the average in similar boroughs of 70 per 10,000 and in England 60 per 10,000 and close to the level at this point last year (rate 89).
- 97 children (20%) were **placed 20 miles or more from Haringey** at the end of October 2014, worse than the 16% target, the position at the beginning of the year and the 12% England average. This area of activity is part of the Haringey 54K Programme and work is underway to expand in-house fostering and increase recruitment of new foster carers.
- Six children were **missing from care** during the month of October and three children were away from placement without authorisation.
- 90% of **Children in Care visits** were completed on time in this period.
- 88% of **Children in Care cases were reviewed** in timescale at the end of October, below the 92% target.
- 81% of children had an **up to date dental visit** and whilst performance has improved this remains below the expected level.
- 51% of school age children have completed **Personal Education Plans (PEP)** at the beginning of November. This is a decline on the 66% achieved before the summer holidays and below the 90% target. Focussed attention with team managers to review blockages and increase the number of up to date PEPs recorded and reviewed is underway.
- Half of children in care have up to date **Care or Pathway Plans**. An assurance review has been completed and work to address the consistency

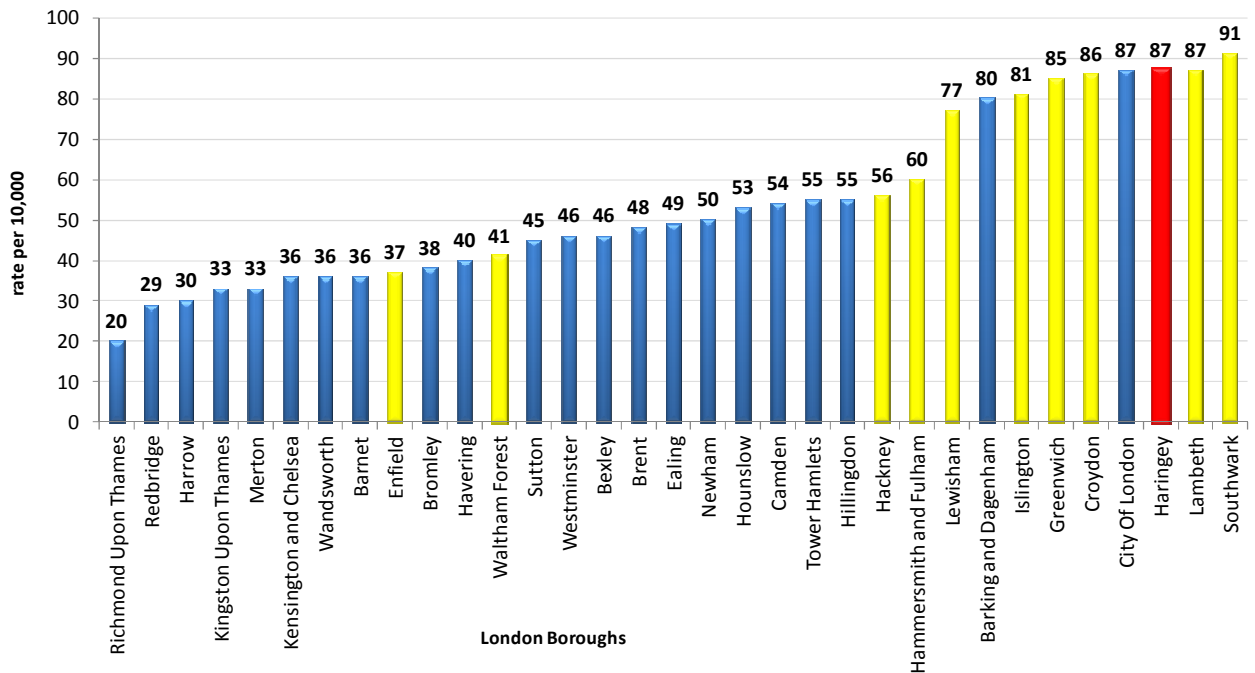
of recording, the quality and timeliness of review of the plans is in progress.

- Performance on **care leavers in suitable accommodation and in education, employment and training** is below target although care leavers aged 19-21 in higher education (16%) compares very favourably with the national position of 6%.
- The **duration of care proceedings** in Haringey is increasing. The average duration for cases concluded in April to September 2014 was 38 weeks with 78% of cases concluded in over the statutory 26 weeks. This compares with the England average position of 32 weeks and our Statistical neighbours of 40 weeks. The Munby judgement has had a significant impact on the duration of cases with adjournments for fair hearing, assessment and to enable parental engagement with 53% of Haringey's cases being determined as exceptional.

3. Children Looked After

3.1. Based on published data at 31st March 2014, Haringey had the second highest rate of children looked after amongst our 10 comparator authorities, only Southwark's rate at 91 was higher. Haringey's current rate of looked after children per 10,000 population at the end of October at 88 is the same rate as at the end of March 2014. The graph below illustrates the **rate per 10,000 children looked after** compared with London rates and highlights our statistical neighbour rates.

Children looked after at 31 March 2014 - Rate per 10,000 population

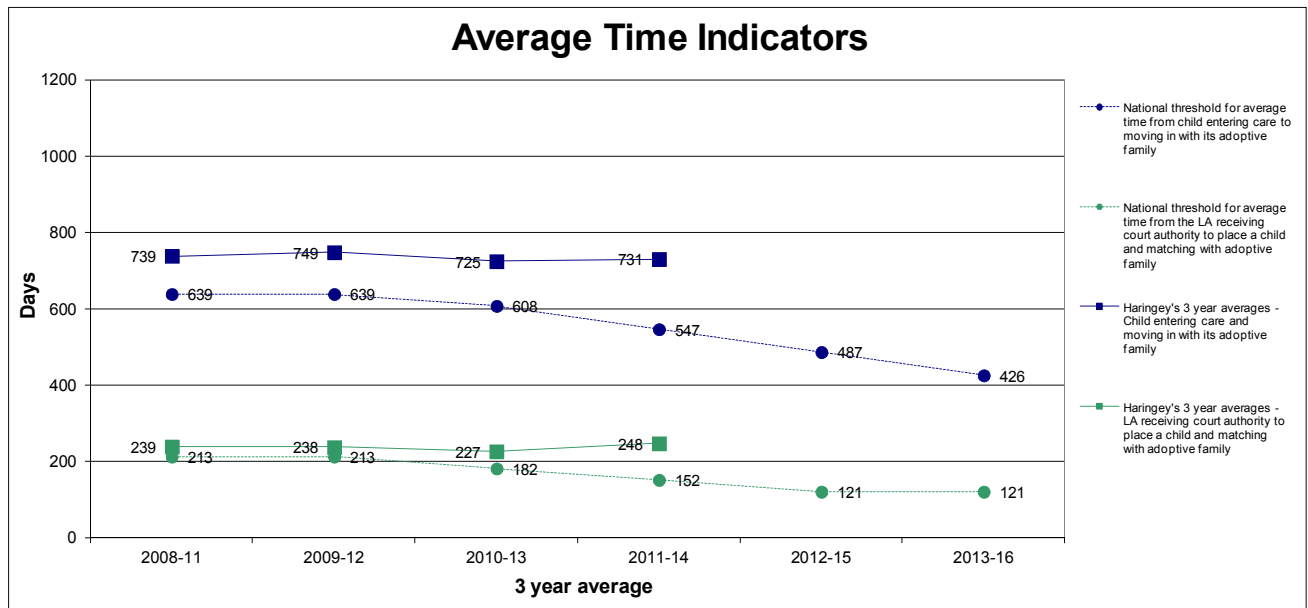


4. Adoption and Permanency

4.1. The latest Adoption Scorecard shows that Haringey's three year average to 2013/14 for timeliness of being placed for adoption has remained unchanged and the gap between Haringey and the national threshold has increased from 117 days based on the threshold for 2010-13 to 184 days based on the revised threshold for 2011-14. Haringey's 2013/14 adoption data in particular included a large proportion of 'hard to place' children who were placed significantly outside of the national threshold, current performance demonstrates improvement in this area.

4.2. Where **times for children who are adopted by their foster family** are stopped at the date the child moved in with the foster family, the average wait in the year to October is 191 days. The adoption scorecard includes this indicator to allow for the fact that there is no change for the child and uses the earlier date to calculate the average wait for the child being placed for adoption. Haringey's 3 year average (2011-14) on this indicator at 502 days is better than the England position of 525 days and is an improvement on the previous period (556 days).

4.3. The 2014 Adoption scorecard for Haringey is illustrated below and shows progress on key indicators relating to timeliness of adoption over time.



4.4. The average time between a local authority receiving court authority to place a child and the local authority deciding on a match to an adoptive family was 248 days (2011-14), a 96 day gap from the national threshold of 152 days for 2011-14 but close to the England 3 year average of 217 days.

4.5. A workstream around permanency began in November 2014 which aims to improve systems and processes and enhance efficiency. There is focus on reviewing children who may be suitable for special guardianship and improving our approach to placements, looking to achieve permanence more quickly for our looked after children.